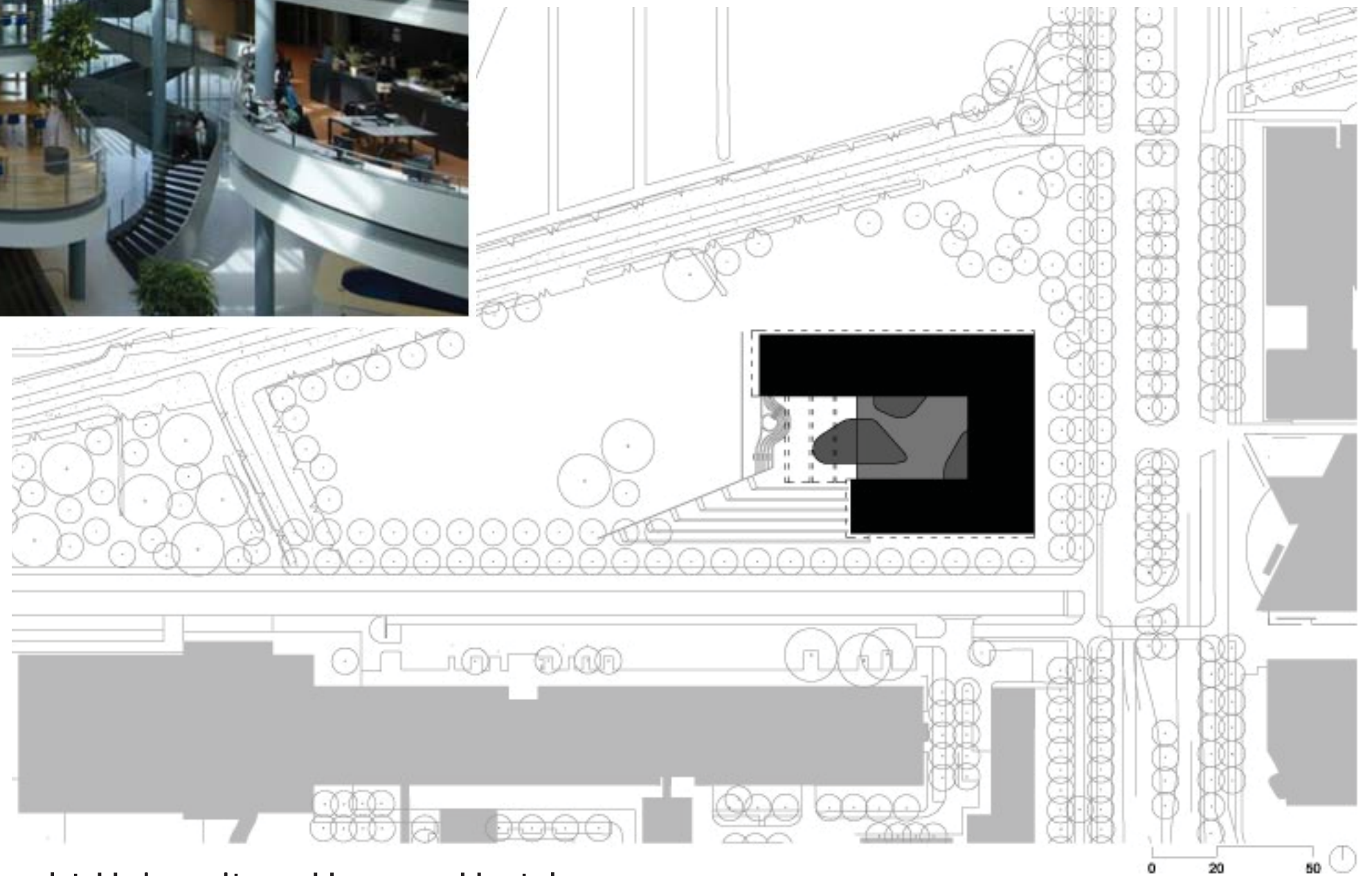


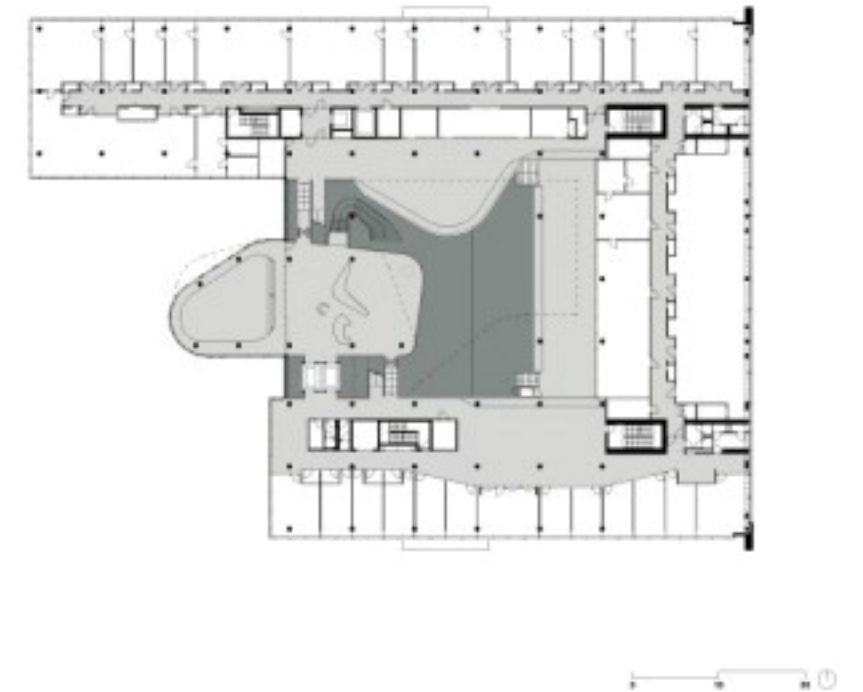
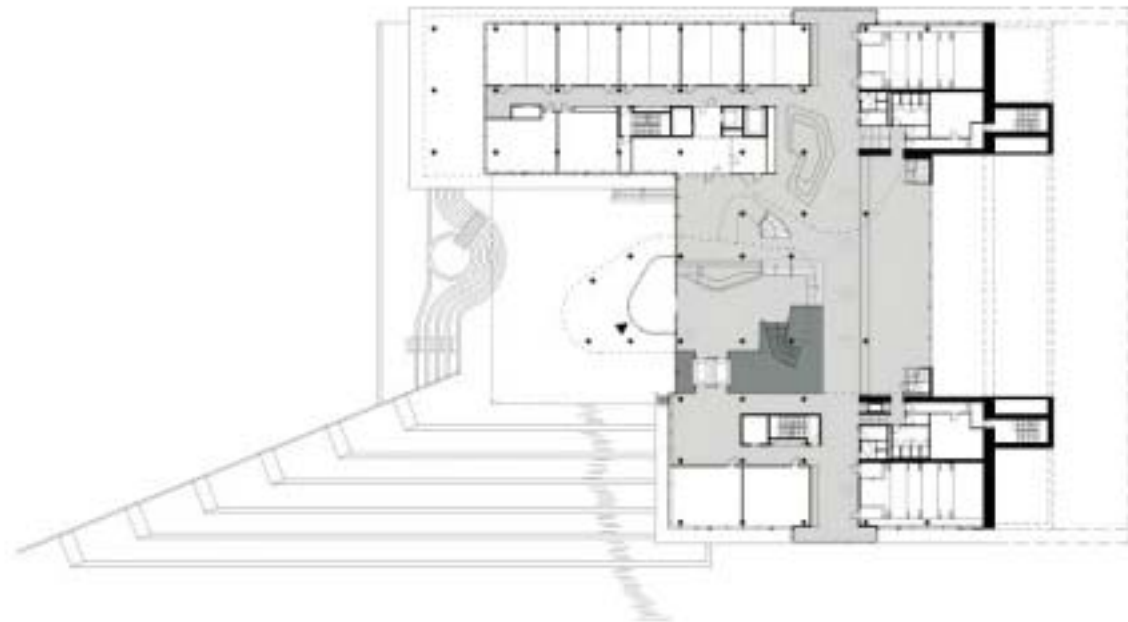
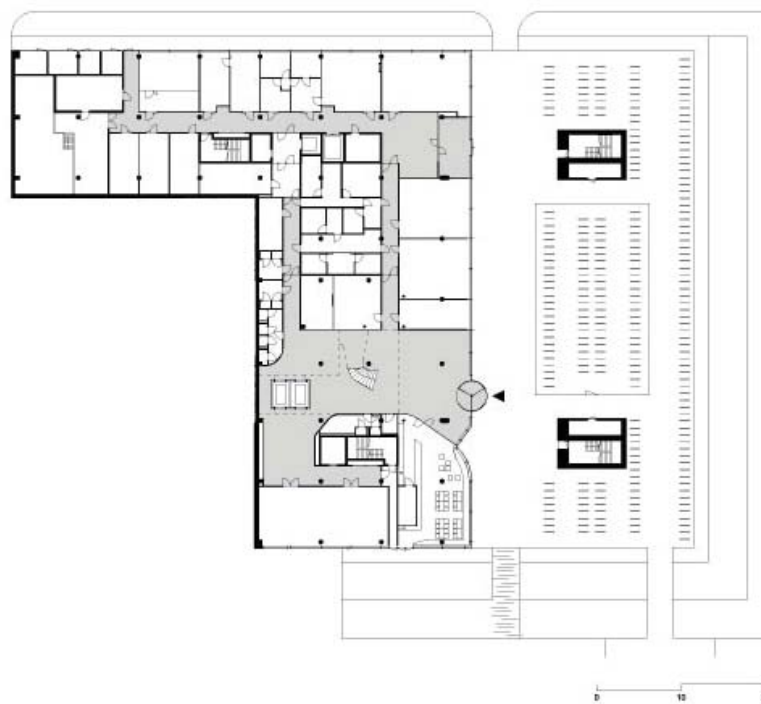


The Faculty of Sciences building at Utrecht University was finished in 2011. The building has multiple floors of classrooms with a large open atrium in the middle of the building. Study sessions, meetings and social gatherings occur in the atrium.

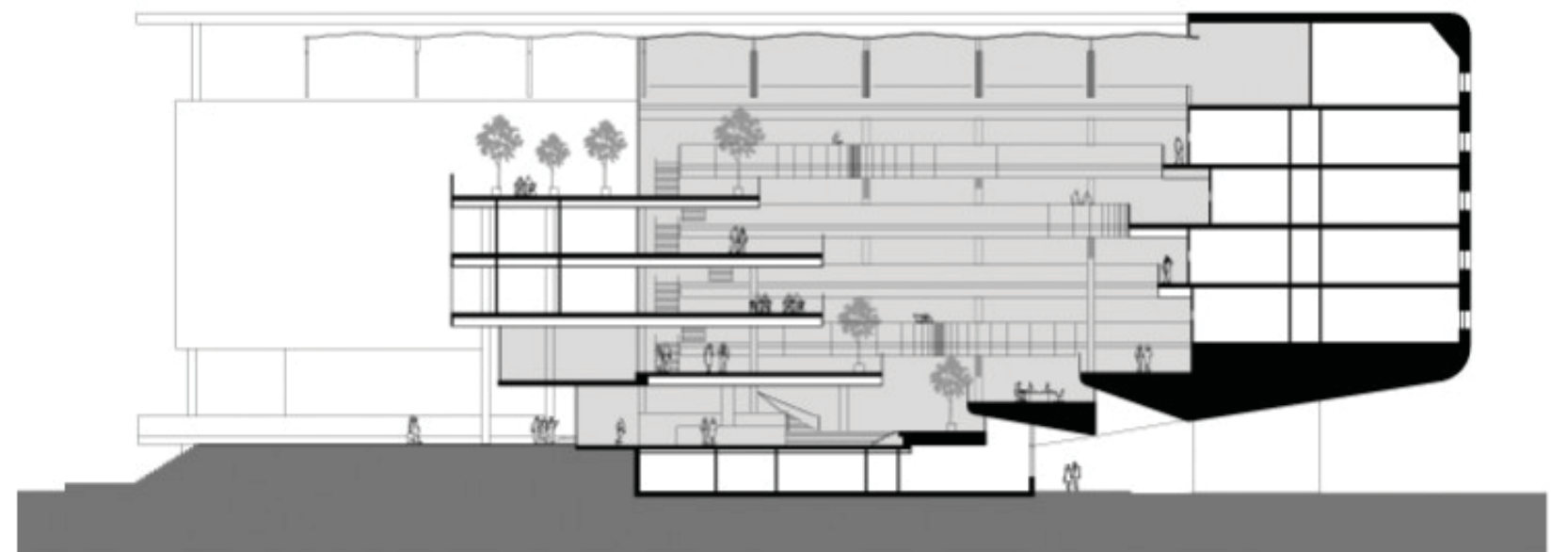


Case Study #1 Faculty of the Sciences, Utrecht University Herman Hertzberger



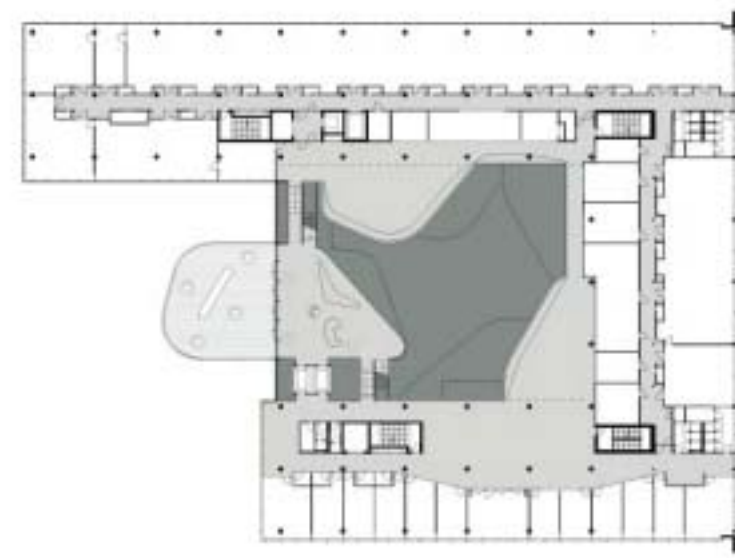
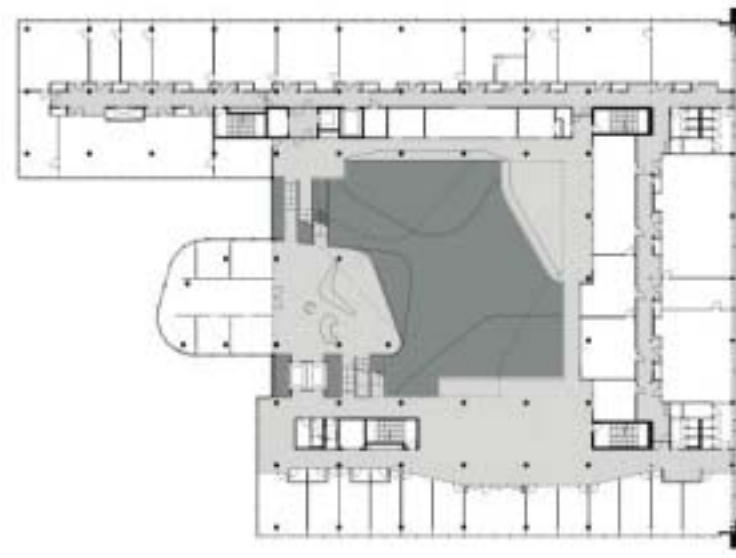
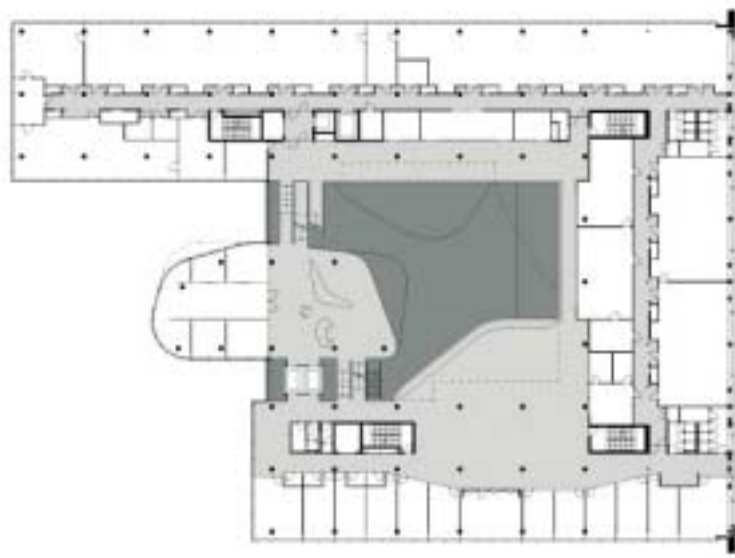


In this section the classrooms are at the right side of the building while the meeting spaces and social spaces are in the center and left parts. This drawing also show different types of entrances into the building on different floors, a more open experience on the left side and a more enclosed experience on the right hand side.



Case Study #1 Faculty of the Sciences, Utrecht University Herman Hertzberger





The building has entrances on multiple floors. The floorplates change shape on every floor in order to create sectional variety and interesting viewing relationships between people using the space. The oval shape in plan view is a meeting space that changes from floor to floor offering a variety of different settings for meetings.

